



A NEW 500-KV TRANSMISSION LINE

Golden Pacific Powerlink

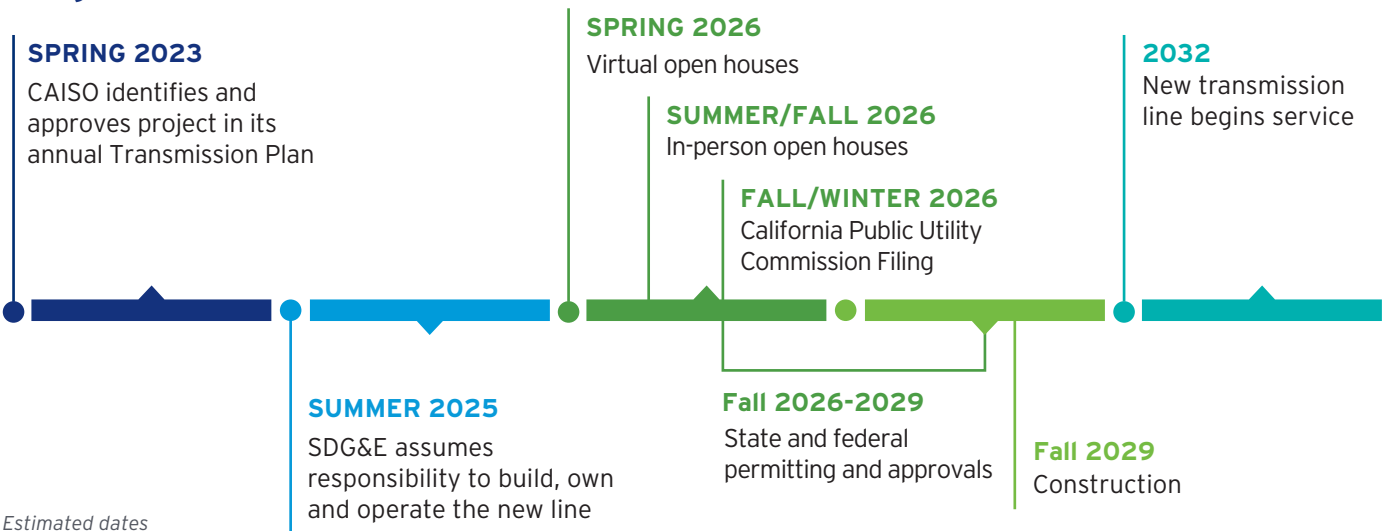
Delivering Tomorrow's Energy

California is projected to use more electricity than ever as homes, transportation, businesses, and industry increasingly rely on electricity. To ensure the state has enough power to meet growing demand, California's transmission planning process has determined that additional transmission capacity is needed to keep the electric system reliable and resilient.

Through the California Independent System Operator's (CAISO) rigorous, multi-year transmission planning process, Golden Pacific Powerlink was identified as a required project to strengthen the statewide grid, reduce congestion, and improve the delivery of electricity to where it's needed most.

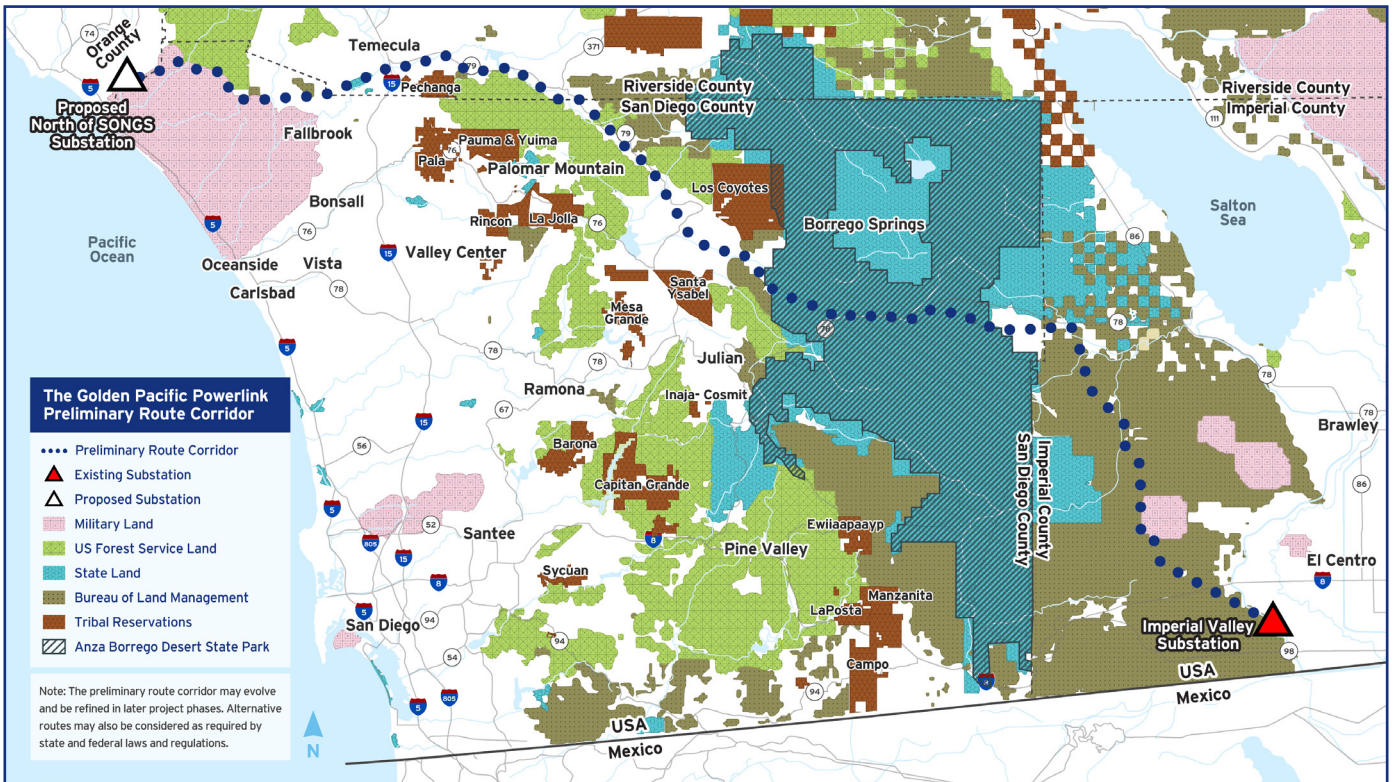
Golden Pacific Powerlink is a proposed new 500-kilovolt (kV) transmission line that SDG&E will build, own, and operate. The project would connect SDG&E's existing Imperial Valley Substation to a new substation to be built near the San Diego-Orange County border, creating a critical new high-capacity pathway to help deliver electricity reliably across Southern California.

Projected Timeline



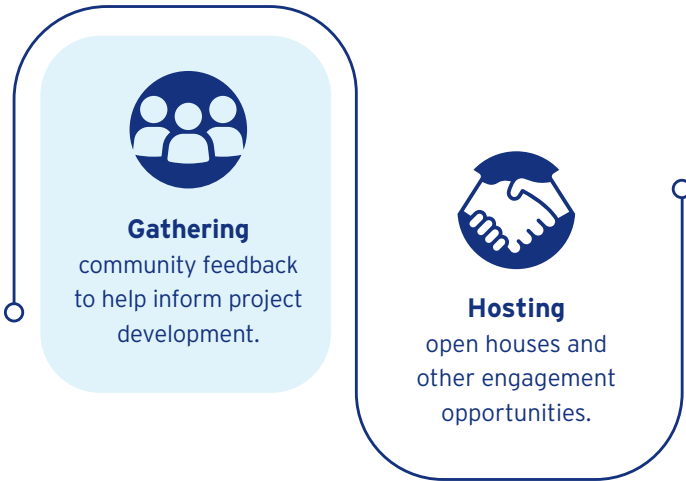
This new line will help keep the region's power supply reliable and allow the state to meet its energy goals as demand continues to grow.

- Create a vital new transmission pathway
- Enhance the region's electrical grid
- Enable greater integration of more electricity generation



Opportunities for Participation

Golden Pacific Powerlink is in early planning and preliminary design. As the project moves forward, SDG&E is committed to engaging with communities and gathering public input to help inform project development and environmental review.



Virtual Open Houses:
May 12 and 14 2026; 12 p.m. and 5:30 p.m.
All events will present the same content

In-Person Open Houses: Later in 2026
Following a comprehensive environmental review process under the California Environmental Quality Act (CEQA) and the National Environmental Policy Act (NEPA), the final route will be reviewed and approved by the California Public Utilities Commission (CPUC) and applicable federal agencies before any construction can begin.

SDG&E's Commitment to Safety and Reliability

With over 140 years of experience delivering energy across the region, SDG&E has a strong track record of building and operating critical infrastructure – from transmission lines to battery storage. The Golden Pacific Powerlink will benefit from this expertise, including SDG&E's award-winning wildfire safety program, which has helped prevent major utility-related wildfires for more than 18 years. Safety and reliability will guide every step of the project.



Scan to learn more or email us at:
GoldenPacific@sdge.com